



Shenzhen JingFuYuan Tech Co., Ltd
Headquarters: 12th Building, Nangang 2nd Industrial Park, SongBai Road,
XILi Town, NanShan District, ShenZhen, P.R.China
Factory: B Building, LanHaiFanKeChuang, 3rd Industrial Zone, ShuTianPu,
GuangMing District, ShenZhen, P.R.C
Hotline: 400 6364 006 Email: support@jfy-tech.com
Tel: +86 755 2663 2536 Website: www.jfy-tech.net

Grid-Connected Inverter Catalog



www.jfy-tech.net

Shenzhen JingFuYuan Tech Co., Ltd

Enterprise Milestone

2003, JFY founded in ShenZhen

2010, First batch of Australian SAA certification inverter manufacturers in China

2011, China national high-tech enterprise

2013, Top 10 PV inverter enterprise in China

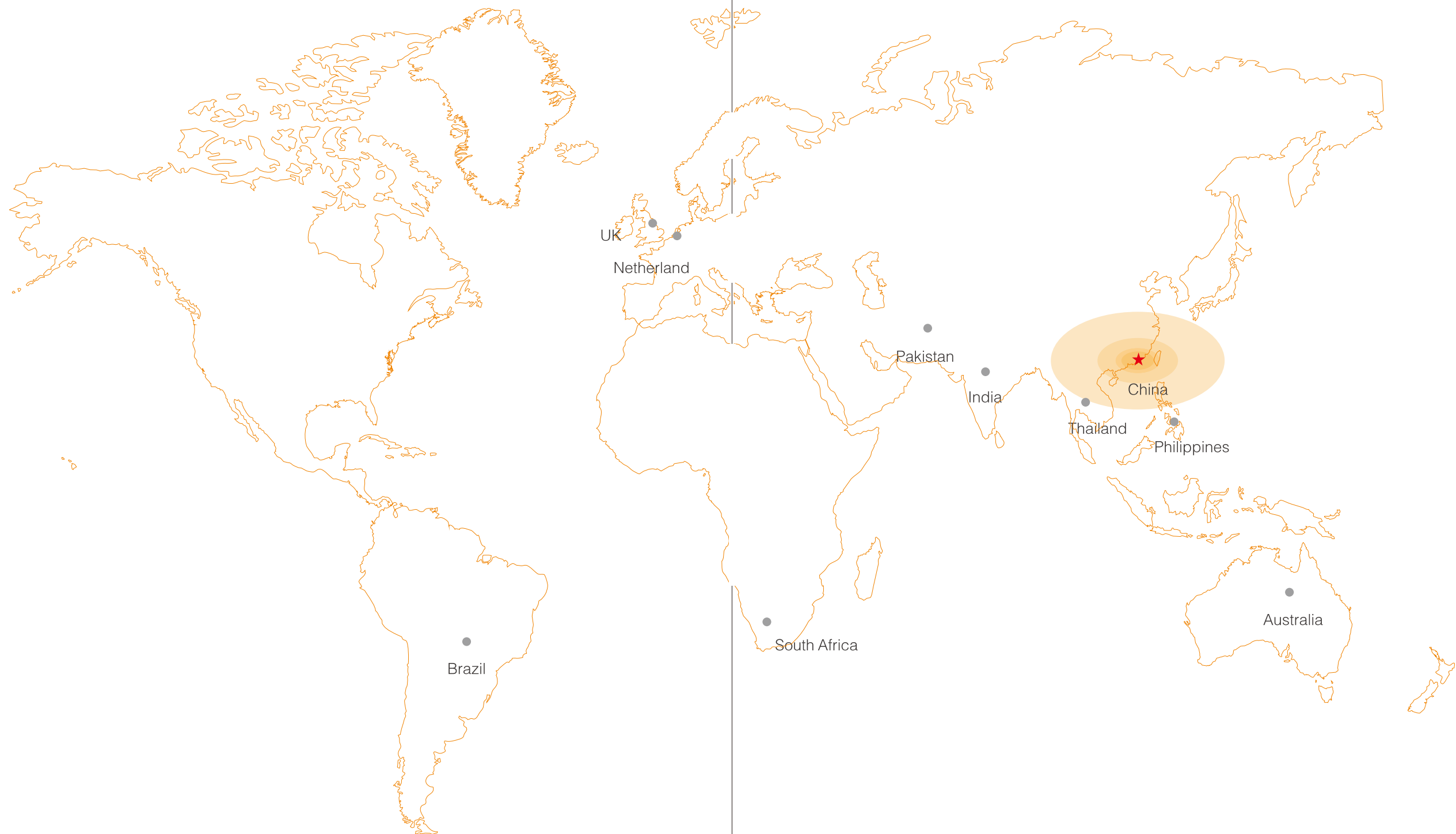
2015, Top 5 Chinese inverter supplier in Netherland

2017, Jiangxi branch of JFY was established

Focus on power electronic field over 15 years

PV inverter industry over 10 years

Provide efficient, stable, reliable inverter



Single-Phase String Inverter



SUNLEAF 1100TL
SUNLEAF 1500TL
SUNLEAF 2000TL
SUNLEAF 2500TL
SUNLEAF 3000TL



SUNLEAF 3600TL
SUNLEAF 4000TL
SUNLEAF 5000TL
SUNLEAF 6000TL



SUNKID 3000HF
SUNKID 5000HF
SUNKID 5000HF-M



SUNSEED 3000TL
SUNSEED 4000TL
SUNSEED 5000TL
SUNSEED 6000TL
SUNSEED 7000TL
SUNSEED 8000TL

Three-Phase String Inverter



SUNTREE 5000TL+
SUNTREE 6000TL+
SUNTREE 8000TL+
SUNTREE 10000TL+
SUNTREE 12000TL+



SUNTREE 15000TL+
SUNTREE 20000TL+
SUNTREE 30000TL+



SUNTREE 40KTL
SUNTREE 50KTL
SUNTREE 60KTL



SUNTREE 40KTH
SUNTREE 50KTH
SUNTREE 60KTH
SUNTREE 70KTH
SUNTREE 80KTH
SUNTREE 80KTU

Central Inverter



SUNFOREST 100KT
SUNFOREST 150KT
SUNFOREST 175KT



SUNFOREST 250KTL
SUNFOREST 500KTL
SUNFOREST 630KTL



SUNFOREST 250KT
SUNFOREST 500KT
SUNFOREST 630KT



SP-1000KTL
SP-1260KTL

Accessories



SCR/SDR-8(M)
SCR/SDR-12(M)
SCR/SDR-16(M)



ACB-1-1
ACB-2-1
ACB-4-1
ACB-6-1



WiFi Plug
GPRS Plug
WiFi Kit
GPRS Kit



ARP 1000

Contents

Company Profile

05-06

Single-Phase String Inverter

07-12

Three-Phase String Inverter

13-20

Central Inverter

21-26

Accessories

27-38

Project References

39-48

Company Profile

About Us

Shenzhen Jingfuyuan Technology Co., Ltd (Abbr. JFY) was Founded in 2003. It's a national high-tech enterprise of China that integrating R&D, production, sales and service. The company has been focusing on the power electronic field over 15 years, providing photovoltaic inverters, EV Charger and UPS solutions.

Our Products

JFY provides complete photovoltaic power system solutions, including residential, commercial and large-scale ground mounted power plants solutions. Among them, PV grid-connected inverter power range from 1.1kW-1.26MW, off-grid inverter power range from 0.5kW-160kW, household hybrid energy storage inverter and supporting monitoring system. The PV inverter sales area covers more than 60 countries, with a cumulative global shipments of over 690,000 units. At the same time, JFY has a complete power range of EV Charger products, which can be applied to different EV models.

Our R&D Strength

As a technology-oriented company, the annual R&D investment of JFY is accounted for more than 10% of the company's total turnover. With a more than 100 employees R&D team, 60% of engineers have 10 years of industry experience. After continuous innovation, JFY has more than 200 patents, which 60 of them are invention patents.

Our Achievement

After years of development in the new energy field, JFY had been awarded the 2018 Polar Star "Chinese Double Ten Inverter Brand", "Top Ten PV Inverter Enterprise", "PV Poverty Alleviation Quality Inverter Brand", "PV Inverter Innovation Award"; In overseas market, JFY became the First batch of Australian SAA certification inverter manufacturers in China and 2015 TOP5 Chinese PV inverter supplier in the Netherlands. "Top Ten Leading Enterprises of EV Charger ", "Chinese EV Charger Top Ten Brands" and etc. honors. JFY always adheres the conception of " God rewards the diligence and Strive for excellence" and will try our best to create more value for customers.

Some Hornors and Certifications

Patents

China national Hi-tech Enterprise
China honest And Trustworthy Enterprise
China Top 10 PV Inverter Enterprise



Certificates



TV Reports



China central television reported

China Shanxi TV reported

China Gansu TV reported

SUNLEAF Series 1.1K-6KTL

Single Phase String Inverter

SUNLEAF



Features

- > Natural cooling, IP65 protection grade
- > LCD screen and LED status indicator display
- > Max. efficiency up to 97.6%
- > RS232/WIFI/GPRS monitoring
- > Support double glass PV module
- > DC 1.3 times of max. power input, AC 1.1 times of rated power output
- > Built-in export limit function (Opt.)

Technical data

	1100TL	1500TL	2000TL	2500TL	3000TL	3600TL	4000TL	5000TL	6000TL
Input (DC Side)									
Max. DC input power (W)	1430	1950	2600	3250	3900	4680	5200	6500	7800
Max. DC voltage (Vdc)	450	450	450	500	500	500	500	500	500
Start voltage (Vdc)	60	150	150	150	150	150	150	150	150
MPPT voltage range (Vdc)	50~450	100~450	100~450	100~500	100~500	100~500	100~500	100~500	100~500
Number of inputs	1	1	1	1	1	2	2	2	2
Number of MPPT	1	1	1	1	1	1	1	1	1
Max. input current (A)	12.5	12.5	12.5	12.5	12.5	25	25	25	25

Output (AC Side)									
Rated output power (W)	1100	1500	2000	2500	3000	3600	4000	5000	6000
Max. output power (VA)	1210	1650	2200	2750	3300	3960	4400	5500	6600
Rated output current (A)	4.7	6.5	8.6	10.8	13	15.7	17.4	21.5	26
Max. output current (A)	5.3	7.9	10.5	12.5	15	17.3	20	25	27.5
Rated output voltage (Vac)	230	230	230	230	230	230	230	230	230
Output voltage range (Vac)*	170~280	170~280	170~280	170~280	170~280	170~280	170~280	170~280	170~280
Grid frequency range (Hz)*	50/60±5	50/60±5	50/60±5	50/60±5	50/60±5	50/60±5	50/60±5	50/60±5	50/60±5
Power factor (cos φ)	0.8 (leading)~ 0.8 (lagging)	0.8 (leading)~ 0.8 (lagging)	0.8 (leading)~ 0.8 (lagging)	0.8 (leading)~ 0.8 (lagging)	0.8 (leading)~ 0.8 (lagging)	0.8 (leading)~ 0.8 (lagging)	0.8 (leading)~ 0.8 (lagging)	0.8 (leading)~ 0.8 (lagging)	0.8 (leading)~ 0.8 (lagging)
THDI	<3%	<3%	<3%	<3%	<3%	<3%	<3%	<3%	<3%

Efficiency									
Max. efficiency	97.0%	97.0%	97.0%	97.6%	97.6%	97.6%	97.6%	97.6%	97.6%
Euro. efficiency	96.5%	96.5%	96.5%	96.8%	96.8%	96.8%	97.0%	97.1%	97.1%
MPPT efficiency	99.9%	99.9%	99.9%	99.9%	99.9%	99.9%	99.9%	99.9%	99.9%

Protections

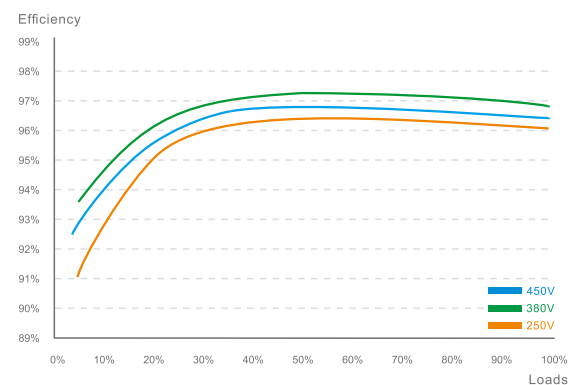
Built-in protections DC Reverse Polarity, Short Circuit, Output Over Current, Output Over Voltage, Insulation Resistance Monitoring, Residual Current Detection, Surge Protection, Anti-Island Protection, Over Temperature Protection

Lightning protection DC Type // AC Type //

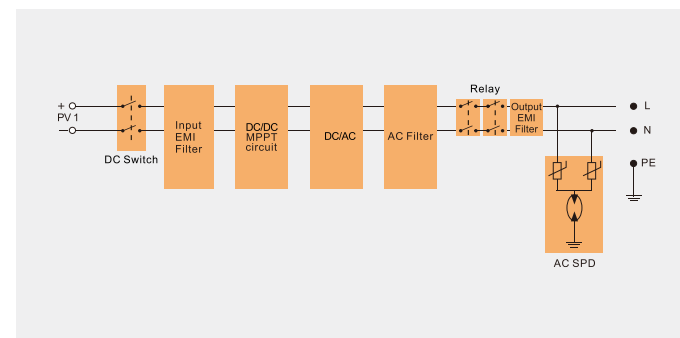
General Data

Operating temperature (°C)	-25~+60	-25~+60	-25~+60	-25~+60	-25~+60	-25~+60	-25~+60	-25~+60	-25~+60
Noise [dB (A)]	≤25	≤25	≤25	≤25	≤25	≤25	≤25	≤25	≤25
Night power consumption (W)	<1	<1	<1	<1	<1	<1	<1	<1	<1
Electrical isolation	Transformerless	Transformerless	Transformerless	Transformerless	Transformerless	Transformerless	Transformerless	Transformerless	Transformerless
Cooling concept	Natural cooling	Natural cooling	Natural cooling	Natural cooling	Natural cooling	Natural cooling	Natural cooling	Natural cooling	Natural cooling
Degree of protection	IP65	IP65	IP65	IP65	IP65	IP65	IP65	IP65	IP65
Communication:RS232/ WiFi/GPRS	yes/opt/opt	yes/opt/opt	yes/opt/opt	yes/opt/opt	yes/opt/opt	yes/opt/opt	yes/opt/opt	yes/opt/opt	yes/opt/opt
Dimension (W*D*H mm)	290*140*295	290*140*295	290*140*295	350*160*350	350*160*350	360*160*390	360*160*390	360*160*390	360*160*390
Weight (kg)	7.5	7.5	7.5	12	12	14.5	14.5	14.5	15.7

5000TL Efficiency Curve



5000TL Topology



SUNKID Series 3-5kW

High Frequency Isolation String Inverter

SUNKID

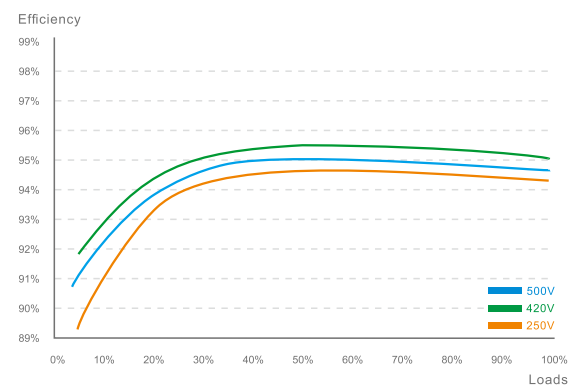


Features

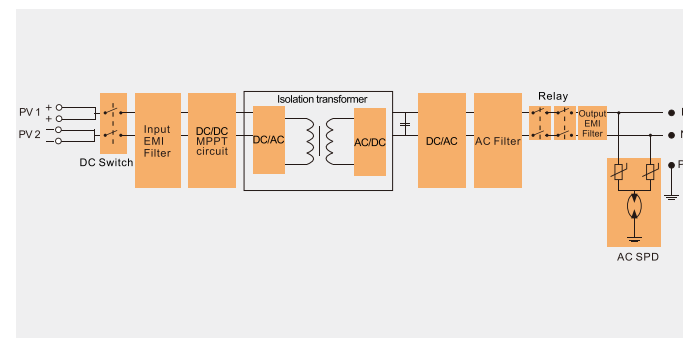
- > High frequency isolation design, suitable for thin film module
- > Wide range input voltage, 100-600Vdc
- > Single/Double MPPT, easy to configure
- > Built-in RS232, WIFI/GPRS monitoring
- > IP65 protection grade, natural cooling and long lifespan
- > Support double glass PV module
- > DC 1.3 times of max. power input, AC 1.1 times of rated power output

Technical data	3000HF	5000HF	5000HF-M
Input (DC Side)			
Max. DC input power (W)	3900	6500	6500
Max. DC voltage (Vdc)	600	600	600
Start voltage (Vdc)	150	150	150
MPPT voltage range (Vdc)	100~500	100~500	100~500
Number of inputs	2	2	2
Number of MPPT	1	1	2
Max. input current (A)	15	20	2*13
Output (AC Side)			
Rated output power (W)	3000	5000	5000
Max. output power (VA)	3300	5500	5500
Rated output current (A)	13	21.5	21.5
Max. output current (A)	15	25	25
Rated output voltage (Vac)	230	230	230
Output voltage range (Vac)*	170~280	170~280	170~280
Grid frequency range (Hz)*	50±5	50±5	50±5
Power factor (cos φ)	0.9 (leading)~0.9 (lagging)	0.9 (leading)~0.9 (lagging)	0.9 (leading)~0.9 (lagging)
THDI	<3%	<3%	<3%
Efficiency			
Max. efficiency	96.3%	96.4%	96.3%
Euro. efficiency	95.4%	95.4%	95.4%
MPPT efficiency	99.9%	99.9%	99.9%
Protections			
Built-in Protections	DC Reverse Polarity, Short Circuit, Output Over Current, Output Over Voltage, Insulation Resistance Monitoring, Residual Current Detection, Surge Protection, Anti-Island Protection, Over Temperature Protection		
Lightning protection	DC Type / AC Type		
General Data			
Operating temperature (°C)	-25~+60	-25~+60	-25~+60
Noise [dB (A)]	≤45	≤45	≤45
Night power consumption (W)	<1	<1	<1
Electrical isolation	High-frequency transformer	High-frequency transformer	High-frequency transformer
Cooling concept	Natural cooling	Natural cooling	Natural cooling
Degree of protection	IP65	IP65	IP65
Communication port: RS232/	yes/opt/opt	yes/opt/opt	yes/opt/opt
WiFi/GPRS			
Dimension (W*D*H mm)	360*160*390	360*160*430	360*160*430
Weight (kg)	15.5	18	18

3000HF Efficiency Curve



3000HF Topology



*AC grid voltage range and frequency range depend on local standards.

SUNSEED Series 3K-8KTL

Single Phase Dual MPPT String Inverter

SUNSEED

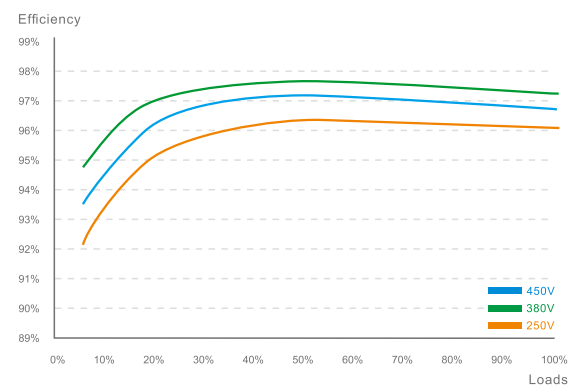


Features

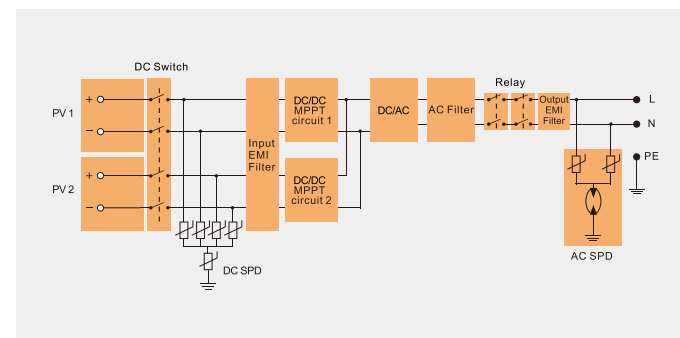
- > Max. input voltage 600V
- > Support double glass PV module
- > Dual MPPT design, high efficient
- > Built-in export limit function (Opt.)
- > IP65 protection grade, natural cooling
- > PF adjustable, 0.8(leading)~0.8(lagging)
- > LCD display, multi-function button, easy operation
- > DC 1.3 times of max. power input, AC 1.1 times of rated power output

Technical data	3000TL	4000TL	5000TL	6000TL	7000TL	8000TL
Input (DC Side)						
Max. DC input power (W)	3900	5200	6500	7800	9100	10400
Max. DC voltage (Vdc)	500	500	500	500	600	600
Start voltage (Vdc)	150	150	150	150	150	150
MPPT voltage range (Vdc)	100~450	100~450	100~450	100~500	100~500	100~500
Number of inputs	2	2	2	2	2	3
Number of MPPT	2	2	2	2	2	2
Max. input current (A)	2*12.5	2*12.5	2*12.5	2*12.5	2*12.5	12.5/25
Output (AC Side)						
Rated output power (W)	3000	4000	5000	6000	7000	8000
Max. output power (VA)	3300	4400	5500	6600	7700	8800
Rated output current (A)	13	17.4	21.5	26.1	30.4	34.8
Max. output current (A)	15	20	25	27.5	31.8	36.4
Rated output voltage (Vac)	230	230	230	230	230	230
Output voltage range (Vac)*	170~280	170~280	170~280	170~280	170~280	170~280
Grid frequency range (Hz)*	50/60±5	50/60±5	50/60±5	50/60±5	50/60±5	50/60±5
Power factor (cos φ)	0.8 (leading)~	0.8 (leading)~	0.8 (leading)~	0.8 (leading)~	0.8 (leading)~	0.8 (leading)~
Power factor (cos φ)	0.8 (lagging)	0.8 (lagging)	0.8 (lagging)	0.8 (lagging)	0.8 (lagging)	0.8 (lagging)
THDI	<3%	<3%	<3%	<3%	<3%	<3%
Efficiency						
Max. efficiency	97.5%	97.5%	97.6%	97.6%	97.8%	97.8%
Euro. efficiency	97.2%	97.2%	97.2%	97.1%	97.3%	97.3%
MPPT efficiency	99.9%	99.9%	99.9%	99.9%	99.9%	99.9%
Protections						
Built-in protections	DC Reverse Polarity, Short Circuit, Output Over Current, Output Over Voltage, Insulation Resistance Monitoring, Residual Current Detection, Surge Protection, Anti-Island Protection, Over Temperature Protection					
Lightning protection	DC Type // AC Type //					
General Data						
Operating temperature (°C)	-25~+60	-25~+60	-25~+60	-25~+60	-25~+60	-25~+60
Noise [dB (A)]	≤25	≤25	≤25	≤25	≤25	≤25
Night power consumption (W)	<1	<1	<1	<1	<1	<1
Electrical isolation	Transformerless	Transformerless	Transformerless	Transformerless	Transformerless	Transformerless
Cooling concept	Natural cooling	Natural cooling	Natural cooling	Natural cooling	Natural cooling	Natural cooling
Degree of protection	IP65	IP65	IP65	IP65	IP65	IP65
Communication:RS232/	yes/opt/opt	yes/opt/opt	yes/opt/opt	yes/opt/opt	yes/opt/opt	yes/opt/opt
WiFi/GPRS						
Dimension (W*D*H mm)	360*160*390	360*160*390	360*160*390	360*160*390	360*160*430	360*160*430
Weight (kg)	14	14.5	15	15.5	18	18.3

8000TL Efficiency Curve



8000TL Topology



SUNTREE Series 5K-12KTL+

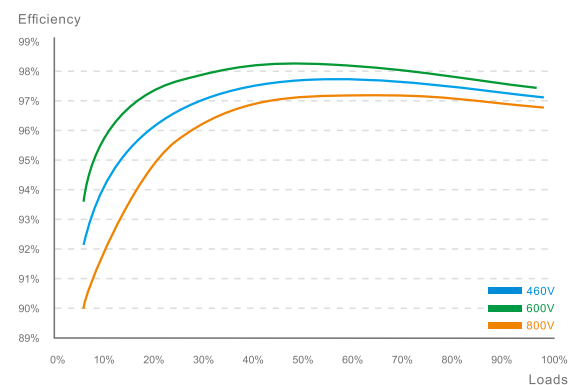
Three Phase String Inverter



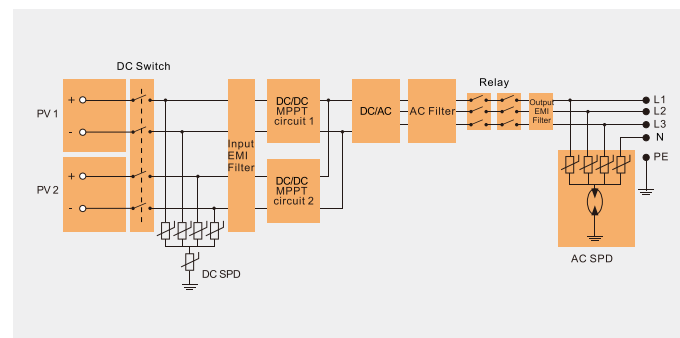
Features

- > Support double glass PV module
- > LCD screen, multiple-function buttons, easy operation and maintenance
- > Wide input voltage range, 250-1000Vdc
- > Max. efficiency of 98.1% and Max. MPPT efficiency of 99.8%
- > Diverse communication connection: RS232, RS485, WIFI, and GPRS
- > IP65 protection degree, natural cooling

10000TL+ Efficiency Curve



10000TL+ Topology



Technical data	5000TL+	6000TL+	8000TL+	10000TL+	12000TL+
Input (DC Side)					
Max. DC input power (W)	6500	7500	9600	12000	14400
Max. DC voltage (Vdc)	900	900	1000	1000	1000
Start voltage (Vdc)	200	200	200	200	200
MPPT voltage range (Vdc)	200~850	200~850	200~960	200~960	200~960
Number of inputs	2	2	2	2	4
Number of MPPT	2	2	2	2	2
Max. input current (A)	2*13	2*13	2*13	2*13	2*13
Output (AC Side)					
Rated output power (W)	5000	6000	8000	10000	12000
Max. output power (VA)	6500	7500	9600	12000	14400
Rated output current (A)	7.2	8.7	11.6	14.4	17.3
Max. output current (A)	7.9	9.5	12.7	15.8	19
Rated output voltage (Vac)	400	400	400	400	400
Output voltage range (Vac)*	323~480	323~480	323~480	323~480	323~480
Grid frequency range (Hz)*	50/60±5	50/60±5	50/60±5	50/60±5	50/60±5
Power factor (cos φ)	0.8 (leading)~ 0.8 (lagging)	0.8 (leading)~ 0.8 (lagging)	0.8 (leading)~ 0.8 (lagging)	0.8 (leading)~ 0.8 (lagging)	0.8 (leading)~ 0.8 (lagging)
THDI	<3%	<3%	<3%	<3%	<3%
Efficiency					
Max. efficiency	97.6%	97.8%	98.1%	98.1%	98.1%
Euro. efficiency	97.1%	97.3%	97.3%	97.5%	97.6%
MPPT efficiency	99.8%	99.8%	99.8%	99.8%	99.8%
Protections					
Built-in protections	DC Reverse Polarity, Short Circuit, Output Over Current, Output Over Voltage, Insulation Resistance Monitoring, Residual Current Detection, Surge Protection, Anti-Island Protection, Over Temperature Protection				
Lightning protection	DC Type / AC Type				
General Data					
Operating temperature (°C)	-25~+60	-25~+60	-25~+60	-25~+60	-25~+60
Noise [dB (A)]	≤30	≤30	≤30	≤30	≤30
Night power consumption (W)	<2	<2	<2	<2	<2
Electrical isolation	Transformerless	Transformerless	Transformerless	Transformerless	Transformerless
Cooling concept	Natural cooling	Natural cooling	Natural cooling	Natural cooling	Natural cooling
Degree of protection	IP65	IP65	IP65	IP65	IP65
Communication:RS232/	yes/yes	yes/yes	yes/yes	yes/yes	yes/yes
RS485/WiFi/GPRS	opt/opt	opt/opt	opt/opt	opt/opt	opt/opt
Dimension (W*D*H mm)	355*190*450	355*190*450	355*190*450	355*190*450	355*190*450
Weight (kg)	18	18	18	18	18

SUNTREE Series 15K-30KTL+

Three Phase String Inverter



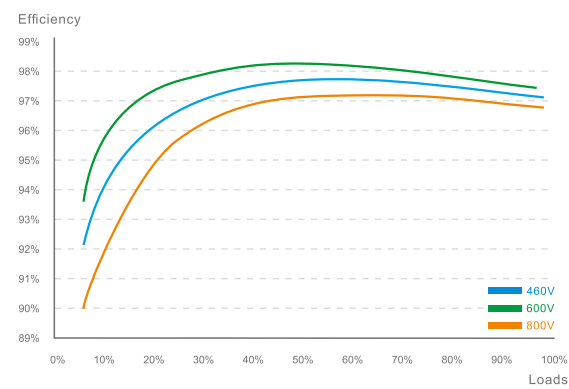
Features

- > Support double glass PV module
- > Multiple MPPT design, maximum efficiency of 98.2%
- > LCD screen, multi-function buttons, easy operation and maintenance
- > Wide input voltage range: 250-1000Vdc
- > Diverse communication connection: RS232, RS485, WIFI, and GPRS
- > IP65 protection degree, natural cooling

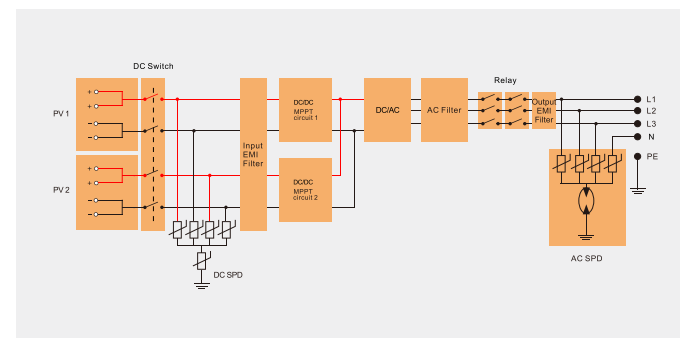
SUNTREE

Technical data	15000TL+	20000TL+	30000TL+
Input (DC Side)			
Max. DC input power (W)	18000	24000	36000
Max. DC voltage (Vdc)	1000	1000	1000
Start voltage (Vdc)	200	200	200
MPPT voltage range (Vdc)	200~960	200~960	200~960
Number of inputs	3	4	6
Number of MPPT	2	2	3
Max. input current (A)	13/25	2*25	3*25
Output (AC Side)			
Rated output power (W)	15000	20000	30000
Max. output power (VA)	18000	24000	36000
Rated output current (A)	21.7	28.9	43.3
Max. output current (A)	23.9	31.8	47.6
Rated output voltage (Vac)	400	400	400
Output voltage range (Vac)*	323~480	323~480	323~480
Grid frequency range (Hz)*	50/60±5	50/60±5	50/60±5
Power factor (cos φ)	0.8 (leading)~0.8 (lagging)	0.8 (leading)~0.8 (lagging)	0.8 (leading)~0.8 (lagging)
THDI	<3%	<3%	<3%
Efficiency			
Max. efficiency	98.1%	98.2%	98.2%
Euro. efficiency	97.5%	97.6%	97.6%
MPPT efficiency	99.8%	99.8%	99.9%
Protections			
Built-in protections	DC Reverse Polarity, Short Circuit, Output Over Current, Output Over Voltage, Insulation Resistance Monitoring, Residual Current Detection, Surge Protection, Anti-Island Protection, Over Temperature Protection		
Lightning protection	DC Type / AC Type		
General Data			
Operating temperature (°C)	-25~+60	-25~+60	-25~+60
Noise [dB (A)]	≤30	≤30	≤30
Night power consumption (W)	<2	<2	<2
Electrical isolation	Transformerless	Transformerless	Transformerless
Cooling concept	Natural cooling	Natural cooling	Natural cooling
Degree of protection	IP65	IP65	IP65
Communication:RS232/RS485/WiFi/GPRS	yes/yes opt/opt	yes/yes opt/opt	yes/yes opt/opt
Dimension (W*D*H mm)	410*210*528	410*210*528	476*258.8*623.5
Weight (kg)	26	28	44

20000TL+ Efficiency Curve



20000TL+ Topology



*AC grid voltage range and frequency range depend on local standards.

SUNTREE Series 40-60KTL

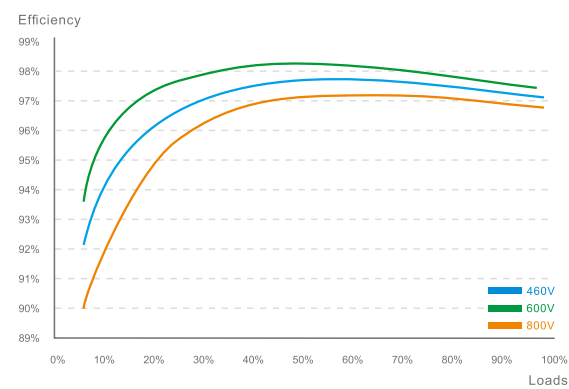
Three Phase String Inverter



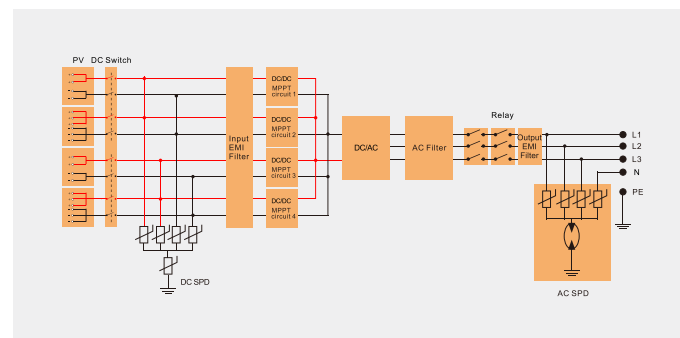
Features

- > Big LCD screen, multi-function buttons, easy operation
- > Wide input voltage range: 250-1100Vdc
- > Multiple MPPT design, maximum efficiency of 98.8%
- > String level monitoring, efficient and quick fault diagnosis
- > Diverse communication connection: RS232, RS485, WIFI, and GPRS

50KTL Efficiency Curve



50KTL Topology



SUNTREE

Technical data	40KTL	50KTL	60KTL
Input (DC Side)			
Max. DC input power (W)	48000	56000	66000
Max. DC voltage (Vdc)	1100	1100	1100
Start voltage (Vdc)	200	200	200
MPPT voltage range (Vdc)	200~1000	200~1000	200~1000
Number of inputs	8	10	12
Number of MPPT	3	4	4
Max. input current (A)	19/28/28	19/28/19/28	4*30
Output (AC Side)			
Rated output power (W)	40000	50000	60000
Max. output power(VA)	48000	56000	66000
Rated output current (A)	57.7	72.2	86.6
Max. output current (A)	63.5	79.4	95.3
Rated output voltage (Vac)	400	400	400
Output voltage range (Vac)*	323~480	323~480	323~480
Grid frequency range (Hz)*	50/60±5	50/60±5	50/60±5
Power factor (cos φ)	0.8 (leading)~0.8 (lagging)	0.8 (leading)~0.8 (lagging)	0.8 (leading)~0.8 (lagging)
THDI	<3%	<3%	<3%
Efficiency			
Max. efficiency	98.1%	98.5%	98.8%
Euro. efficiency	98.0%	98.1%	98.2%
MPPT efficiency	99.9%	99.9%	99.9%
Protections			
Built-in protections	DC Reverse Polarity, Short Circuit, Output Over Current, Output Over Voltage, Insulation Resistance Monitoring, Residual Current Detection, Surge Protection, Anti-Island Protection, Over Temperature Protection		
Lightning protection	DC Type / AC Type		
General Data			
Operating temperature (°C)	-25~+60	-25~+60	-25~+60
Noise [dB (A)]	≤60	≤60	≤60
Night power consumption (W)	<2	<2	<2
Electrical isolation	Transformerless	Transformerless	Transformerless
Cooling concept	Forced air cooling	Forced air cooling	Forced air cooling
Degree of protection	IP65	IP65	IP65
Communication:RS232/	yes/yes	yes/yes	yes/yes
RS485/WIFI/GPRS	opt/opt	opt/opt	opt/opt
Dimension (W*D*H mm)	476*259*743	545*270*782	545*270*782
Weight (kg)	53	58	62

SUNTREE Series 40-80KTH(U)

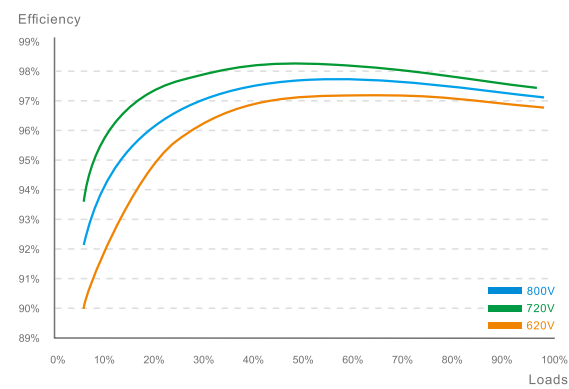
Three Phase String Inverter



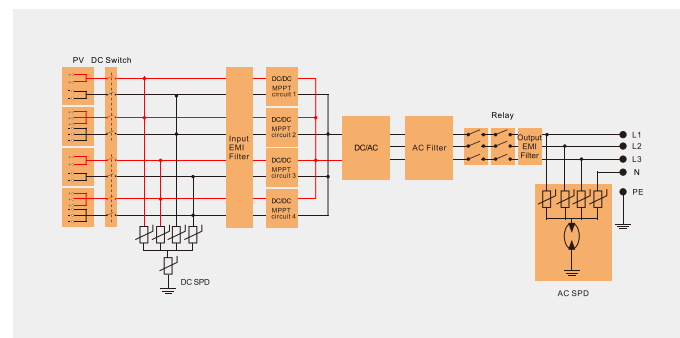
Features

- > Big LCD screen, multi-function buttons, easy operation
- > Wide input voltage range: 250-1100Vdc
- > Multiple MPPT design, maximum efficiency of 98.8%
- > String level monitoring, efficient and quick fault diagnosis
- > Diverse communication connection: RS232, RS485, WIFI, and GPRS, remote firmware upgrade, easy to maintain
- > Integrated DC fuses and DC/AC surge protection for 70kW/80kW model
- > Combined design of electrolytic capacitor and film capacitor for longer life cycle

80KTH Efficiency Curve



80KTH Topology



SUNTREE

Technical data	40KTH	50KTH	60KTH	70KTH	80KTH	80KTU
Input (DC Side)						
Max. DC input power (W)	48000	56000	66000	77000	88000	88000
Max. DC voltage (Vdc)	1100	1100	1100	1100	1100	1100
Start voltage (Vdc)	200	200	200	200	200	200
MPPT voltage range (Vdc)	200~1000	200~1000	200~1000	200~1000	200~1000	200~1000
Number of inputs	8	10	12	12	12	12
Number of MPPT	3	4	4	4	4	4
Max. input current (A)	19/28/28	19/28/19/28	4*30	4*37.5	4*39	4*39
Output (AC Side)						
Rated output power (W)	40000	50000	60000	70000	80000	80000
Max. output power(VA)	48000	56000	66000	77000	88000	88000
Rated output current (A)	48	60	75.7	84.2	96.2	85.5
Max. output current (A)	52.8	66	83.2	93	105	94
Rated output voltage (Vac)	480	480	480	480	480	540
Output voltage range (Vac)*	384~576	384~576	384~576	384~576	384~576	432~648
Grid frequency range (Hz)*	50/60±5	50/60±5	50/60±5	50/60±5	50/60±5	50/60±5
Power factor (cos φ)	Default setting 1, adjustable 0.8 (leading)~0.8 (lagging)					
THDI	<3%	<3%	<3%	<3%	<3%	<3%
Efficiency						
Max. efficiency	98.1%	98.5%	98.8%	98.8%	98.8%	98.8%
Euro. efficiency	98.2%	98.3%	98.2%	98.4%	98.4%	98.4%
MPPT efficiency	99.9%	99.9%	99.9%	99.9%	99.9%	99.9%
Protections						
Built-in protections	DC Reverse Polarity, Short Circuit, Output Over Current, Output Over Voltage, Insulation Resistance Monitoring, Residual Current Detection, Surge Protection, Anti-Island Protection, Over Temperature Protection					
Lightning protection	DC Type II / AC Type II					
General Data						
Operating temperature (°C)	-25~+60	-25~+60	-25~+60	-25~+60	-25~+60	-25~+60
Noise [dB (A)]	≤60	≤60	≤60	≤60	≤60	≤60
Night power consumption (W)	<2	<2	<2	<2	<2	<2
Electrical isolation	Transformerless	Transformerless	Transformerless	Transformerless	Transformerless	Transformerless
Cooling concept	Forced air cooling	Forced air cooling	Forced air cooling	Forced air cooling	Forced air cooling	Forced air cooling
Degree of protection	IP65	IP65	IP65	IP65	IP65	IP65
Communication:RS232/	yes/yes	yes/yes	yes/yes	yes/yes	yes/yes	yes/yes
RS485/WiFi/GPRS	opt/opt	opt/opt	opt/opt	opt/opt	opt/opt	opt/opt
Dimension (W*D*H mm)	476*259*743	545*270*782	545*270*782	545*270*782	545*270*782	545*270*782
Weight (kg)	53	58	62	63	67	67

SUNFOREST Series 100-175KT

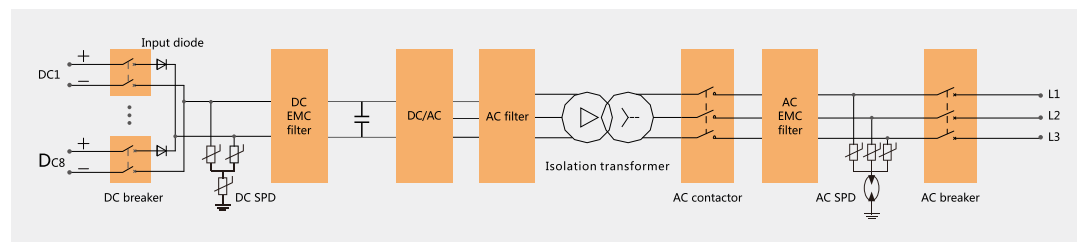
Central Inverter



Features

- > Built-in isolation transformer, 400Vac output
- > Active power continuously adjustable (0~100%)
- > Advanced air duct design, long life of the fan
- > Support RS485, GPRS communication
- > With anti-island, active and reactive power adjustment function etc

Circuit Diagram



SUNFOREST

Technical Data	100KT	150KT	175KT
Input (DC side)			
Max. DC input power (kW)	115	172	202
Max. DC input voltage (Vdc)	1000	1000	1000
MPPT voltage range (Vdc)	450~820	450~820	450~820
Start voltage (Vdc)	490	490	490
Number of inputs	2	4	4
Number of MPPT	1	1	1
Max. input current (A)	250	380	500
Output (AC side)			
Rated output power (kW)	100	150	175
Max. output power (kW)	110	165	192
Rated output current (A)	144	217	254
Max. output current (A)	158	238	280
Rated AC voltage (Vac)	400	400	400
AC voltage range (Vac)	360~440	360~440	360~440
AC frequency range (Hz)	50±5	50±5	50±5
Power factor (cos φ)	0.9 (leading)~0.9 (lagging)	0.9 (leading)~0.9 (lagging)	0.9 (leading)~0.9 (lagging)
THDI	<3%	<3%	<3%
Efficiency			
Max. efficiency	97.1%	97.2%	97.2%
Euro. efficiency	96.4%	96.5%	96.6%
MPPT efficiency	99.9%	99.9%	99.9%
Protections			
Built-in Protections	DC Reverse Polarity, Short Circuit, Output Over Current, Output Over Voltage, Insulation Resistance Monitoring, Residual Current Detection, Surge Protection, Anti-Island Protection, Over Temperature Protection		
General Data			
Operating temperature (°C)	-25~+60	-25~+60	-25~+60
Max. altitude (m)	6000	6000	6000
Noise [dB(A)]	≤65	≤65	≤65
Night power consumption (W)	<100	<100	<100
Electrical isolation	Transformer	Transformer	Transformer
Cooling concept	Forced air cooling	Forced air cooling	Forced air cooling
Protection grade	IP20	IP20	IP20
Communication port	RS485	RS485	RS485
Dimension (W*D*H mm)	750*1750*640	1000*830*2000	1000*830*2000
Weight (kg)	780	1100	1150

*AC grid voltage range and frequency range depend on local standards.

SUNFOREST Series 250-630KT (L)

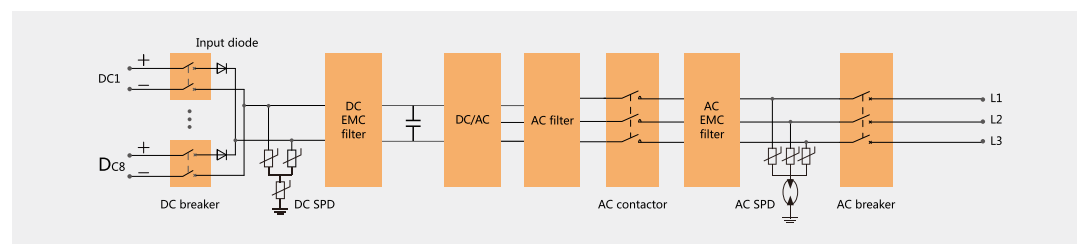
Central Inverter



Features

- > Output voltage optional (L represent transformerless design)
- > Advanced air duct design, long life of the fan
- > Support RS485, GPRS communication
- > With ZVRT, anti-island, active and reactive power adjustment function etc
- > First design with input side intergrated distribution unit

Circuit Diagram (Transformerless)



SUNFOREST

Technical Data	250KTL	250KT	500KTL	500KT	630KTL	630KT
Input (DC side)						
Max. DC input power (kW)	285	285	570	570	715	715
Max. DC input voltage (Vdc)	1000	1000	1000	1000	1000	1000
MPPT voltage range (Vdc)	500~820	500~820	500~820	500~820	500~820	500~820
Start voltage (Vdc)	550	550	550	550	550	550
Number of inputs	4	4	8	8	8	8
Number of MPPT	1	1	1	1	1	1
Max. input current (A)	600	600	1200	1200	1400	1400
Output (AC side)						
Rated output power (kW)	250	250	500	500	630	630
Max. output power (kW)	275	275	550	550	693	693
Rated output current (A)	457	362	915	725	1155	910
Max. output current (A)	500	400	1006	800	1270	1000
Rated AC voltage (Vac)	315	400	315	400	315	400
AC voltage range (Vac)	283~347	360~440	283~347	360~440	283~347	360~440
AC frequency range (Hz)	50±5	50±5	50±5	50±5	50±5	50±5
Power factor (cos φ)	0.9 (leading)~ 0.9 (lagging)	0.9 (leading)~ 0.9 (lagging)	0.9 (leading)~ 0.9 (lagging)	0.9 (leading)~ 0.9 (lagging)	0.9 (leading)~ 0.9 (lagging)	0.9 (leading)~ 0.9 (lagging)
THDI	<3%	<3%	<3%	<3%	<3%	<3%
Efficiency						
Max. efficiency	98.4%	97.3%	98.6%	97.3%	98.6%	97.5%
Euro. efficiency	98.0%	96.8%	98.1%	96.6%	98.2%	97.0%
MPPT efficiency	99.9%	99.9%	99.9%	99.9%	99.9%	99.9%
Protections						
Built-in Protections	DC Reverse Polarity, Short Circuit, Output Over Current, Output Over Voltage, Insulation Resistance Monitoring, Residual Current Detection, Surge Protection, Anti-Island Protection, Over Temperature Protection					
General Data						
Operating temperature (°C)	-25~+60	-25~+60	-25~+60	-25~+60	-25~+60	-25~+60
Max. altitude (m)	6000	6000	6000	6000	6000	6000
Noise [dB(A)]	≤45	≤45	≤45	≤45	≤45	≤45
Night power consumption (W)	<100	<100	<100	<100	<100	<100
Electrical isolation	Transformerless	Transformer	Transformerless	Transformer	Transformerless	Transformer
Cooling concept	Forced air cooling	Forced air cooling	Forced air cooling	Forced air cooling	Forced air cooling	Forced air cooling
Protection grade	IP20	IP20	IP20	IP20	IP20	IP20
Communication port	RS485	RS485	RS485	RS485	RS485	RS485
Dimension (W*D*H mm)	1000*830*2000	1000*830*2000	1200*800*2050	2400*800*2050	1350*900*2200	2550*900*2200
Weight (kg)	890	1650	1327	2950	1677	3300

*AC grid voltage range and frequency range depend on local standards.

SP-1000 / 1260KTL

Megawatt Inverter Unit



SP-1000 / 1260KTL

Technical Data

1000KTL

1260KTL

Input (DC side)

Max. DC input power (kW)	1157	1410
Max. DC input voltage (Vdc)	1000	1000
MPPT voltage range (Vdc)	500~820	500~820
Start voltage (Vdc)	520	520
Number of inputs	16	16
Number of MPPT	2	2
Max. input current (A)	2400	2800

Output (AC side)

Rated output power (kW)	1000	1260
Max. output power (kW)	1100	1400
Rated output current (A)	1830	2310
Max. output current (A)	2016	2566
Rated AC voltage (Vac)	315	315
AC voltage range (Vac)	283~347	283~347
AC frequency range (Hz)	50±5	50±5
Power factor (cos φ)	0.9 (leading)~0.9(lagging)	0.9 (leading)~0.9(lagging)
THDI	<3%	<3%

Efficiency

Max. efficiency	98.6%	98.6%
Euro. efficiency	98.1%	98.2%
MPPT efficiency	99.9%	99.9%

Protections

Built-in Protections	DC Reverse Polarity, Short Circuit, Output Over Current, Output Over Voltage, Insulation Resistance Monitoring, Residual Current Detection, Surge Protection, Anti-Island Protection, Over Temperature Protection
----------------------	---

General Data

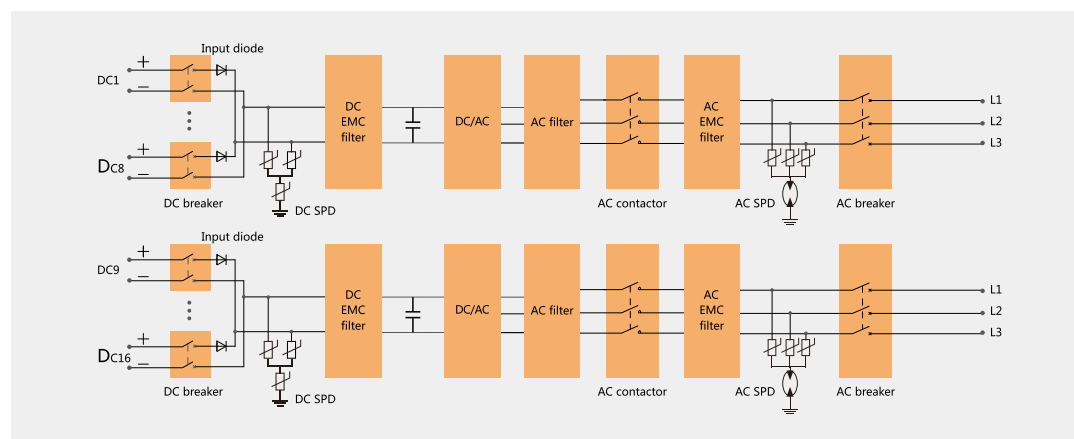
Operating temperature (°C)	-35~+55	-35~+55
Noise [dB(A)]	≤65	≤65
Night power consumption (W)	<200	<200
Electrical isolation	Transformerless	Transformerless
Cooling concept	Forced air cooling	Forced air cooling
Protection grade	IP54	IP54
Communication port	RS485	RS485
Dimension (W*D*H mm)	2440*1750*2400	3500*3000*2700
Weight (kg)	7200	7700

*AC grid voltage range and frequency range depend on local standards.

Features

- > Integrated design, IP54 protection grade, easy to transport and install
- > Built-in two 500kW/630kW high efficiency inverters with complete power distribution, fire protection, monitoring facilities to meet fast and safe grid-connected requirements
- > Integrated DC power distribution and heat dissipation design, reduce the overall deployment costs
- > Dual power redundant supply scheme, improving system reliability
- > With ZVRT, anti-island, active and reactive power adjustment function etc

Circuit Diagram



PV Array Combiner Box

SCR/SDR-16(M)



Features

- > Integrated monitoring function, RS485 communication (smart type)
- > IP65 protection grade, meet outdoor installation requirements
- > Greatly simplify system wiring connection
- > Wide range input voltage, max up to 1000V
- > Dedicated PV fuse and SPD
- > Accept user-customized solutions (volume, number of access channel, DC fuse etc.)

Model (Non smart)	SCR-8	SDR-8	SCR-12	SDR-12	SCR-16	SDR-16
Max. PV input voltage (Vdc)	1000	1000	1000	1000	1000	1000
Max. PV input number	8	8	12	12	16	16
Rated current of each fuse (A)	15	15	15	15	15	15
Output terminal size	PG21	PG21	PG21	PG21	PG21	PG21
Protection grade	IP65	IP65	IP65	IP65	IP65	IP65
Environment temperature (°C)	-25~60	-25~60	-25~60	-25~60	-25~60	-25~60
Environment humidity	0~99%	0~99%	0~99%	0~99%	0~99%	0~99%
Lightning protection	Type II	Type II	Type II	Type II	Type II	Type II
Anti-reverse function	No	Yes	No	Yes	No	Yes
Dimension (L*W*H mm)	480*500*213	570*550*230	480*500*213	570*550*230	550*500*218	620*550*186
Weight (kg)	28	28	30	30	32	32

System Diagram



Model (Smart)	SCR-8M	SDR-8M	SCR-12M	SDR-12M	SCR-16M	SDR-16M
Max. PV input voltage (Vdc)	1000	1000	1000	1000	1000	1000
Max. PV input number	8	8	12	12	16	16
Rated current of each fuse (A)	15	15	15	15	15	15
Output terminal size	PG21	PG21	PG21	PG21	PG21	PG21
Protection grade	IP65	IP65	IP65	IP65	IP65	IP65
Environment temperature (°C)	-25~60	-25~60	-25~60	-25~60	-25~60	-25~60
Environment humidity	0~99%	0~99%	0~99%	0~99%	0~99%	0~99%
Lightning protection	Type II	Type II	Type II	Type II	Type II	Type II
Anti-reverse function	No	Yes	No	Yes	No	Yes
Communication port	RS485	RS485	RS485	RS485	RS485	RS485
Dimension (L*W*H)	480*500*213	570*550*230	480*500*213	570*550*230	550*500*218	620*550*186
Weight (kg)	28	28	30	30	32	32

Compliance with CQC, TUV

- Description:
- ① No anti-reverse diode
 - ② With anti-reverse diode
 - ③ Max input number
 - ④ Smart model with monitoring function
- SCR/SDR-8 M ① ② ③④

AC Combiner Box

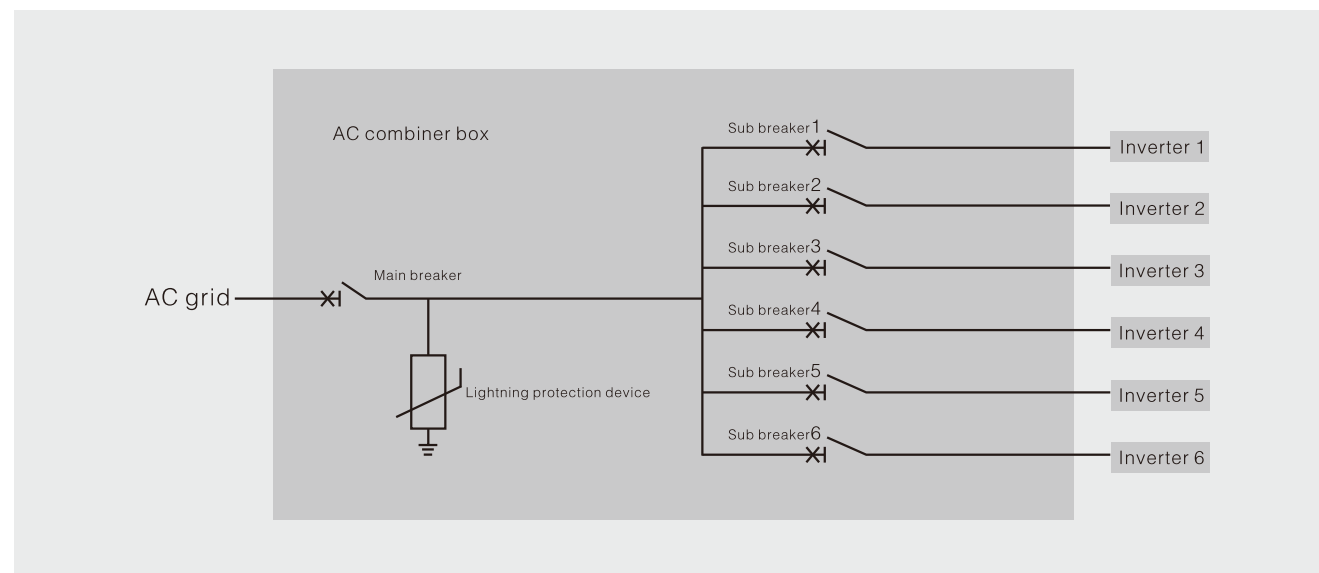
AC Combiner Box



Features

- > Choose world-class component supplier
- > Greatly simplify system wiring connection, easy to maintain
- > High protection grade, adapt to outdoor severe applications
- > Improve system reliability and safety
- > Special customization according to customer needs (including size, internal power distribution unit)

System Diagram



Technical Data

Model	ACB-1-1 220V 40A	ACB-1-1 380V 63A	ACB-1-1 380V 100A
Max. input inverter number	1	1	1
Output loop	1	1	1
AC output rated power (kW)	6	30	50
Rated voltage (Vac)	220	380	380
Max. branch input current (A)	40	63	100
Max. input current (A)	40	63	100
Lightning protection	Type II	Type II	Type II
Insulating strength	3000Vac, 1 min	3000Vac, 1 min	3000Vac, 1 min
Protection grade	IP65	IP65	IP65
Dimension (W*D*H mm)	250*200*150	300*400*130	300*400*130
Weight (kg)	5	15	15

Model	ACB-2-1 380V 63/125A	ACB-2-1 480V 100/250A	ACB-4-1 380V 100/400A
Max. input inverter number	2	2	4
Output loop	1	1	1
AC output rated power (kW)	60	100	200
Rated voltage (Vac)	380	480	380
Max. branch input current (A)	63	100	100
Max. input current (A)	125	250	400
Lightning protection	Type II	Type II	Type II
Insulating strength	3000Vac, 1 min	3000Vac, 1 min	3000Vac, 1 min
Protection grade	IP65	IP65	IP65
Dimension (W*D*H mm)	300*400*150	450*480*195	630*650*215
Weight (kg)	15	35	45

Model	ACB-4-1 480V 80/400A	ACB-6-1 380V 100/630A	ACB-6-1 480V 80/500A
Max. input inverter number	4	6	6
Output loop	1	1	1
AC output rated power (kW)	200	300	300
Rated voltage (Vac)	480	380	480
Max. branch input current (A)	80	100	80
Max. input current (A)	400	630	500
Lightning protection	Type II	Type II	Type II
Insulating strength	3000Vac, 1 min	3000Vac, 1 min	3000Vac, 1 min
Protection grade	IP65	IP65	IP65
Dimension (W*D*H mm)	719*630*215	630*650*215	880*710*255
Weight (kg)	55	45	70

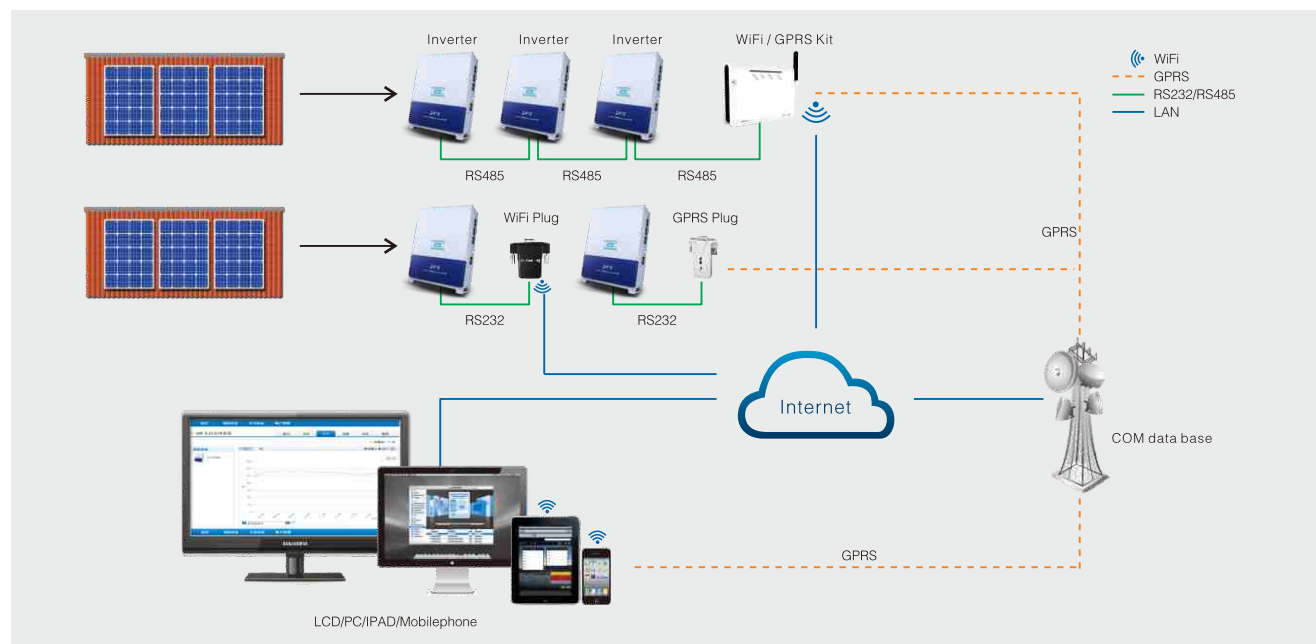
Data Logger



Features

- > Connect through RS232/RS485 port, easy to operate
- > Built-in WiFi/GPRS professional module
- > Real-time monitoring of inverter operation status through PC, WeChat public account and mobile APP
- > Apply to update the inverter firmware through WiFi/GPRS
- > Friendly configuration interface, easy to set up

System Diagram



Data Logger

Technical Data	WiFi Plug	GPRS Plug	WiFi Kit	GPRS Kit
Communication Data				
Inverter Com port	RS232	RS232	RS485	RS485
Remote Com port	802.11 b/g/n	802.11 b/g/n	(802.11 b/g)/Ethernet	(802.11 b/g)/Ethernet
Max. support inverter number	1	1	10	10
Serial Port Com rate (bps)	9600	9600	9600	9600
Communication distance (m)	100 (Open space)	Network coverage area	300 (Open space)	Network coverage area
Data transfer interval (min)	5	5	5	5
Firmware update mode	Remote	Remote	Serial port/Remote	Serial port/Remote
Data access mode	WiFi peer to peer	GPRS peer to peer	WiFi peer to peer/Serial port	WiFi peer to peer/Serial port
Parameter setting	Server	Server	Server	Server
Power supply	RS232 port	RS232 port	DC5V (Power adapter)	DC5V (Power adapter)
General Dada				
Operating temperature (°C)	-25~+60	-25~+60	-10~+65	-10~+65
Storage temperature (°C)	-40~+80	-40~+80	-40~+80	-40~+80
Protection grade	IP65	IP65	IP21	IP21
Dimension (W*D*H mm)	63.3*64.6*28.6	65.1*30*86	110*80*26	110*80*26

Anti-Reverse Power Controller

ARP1000



Features

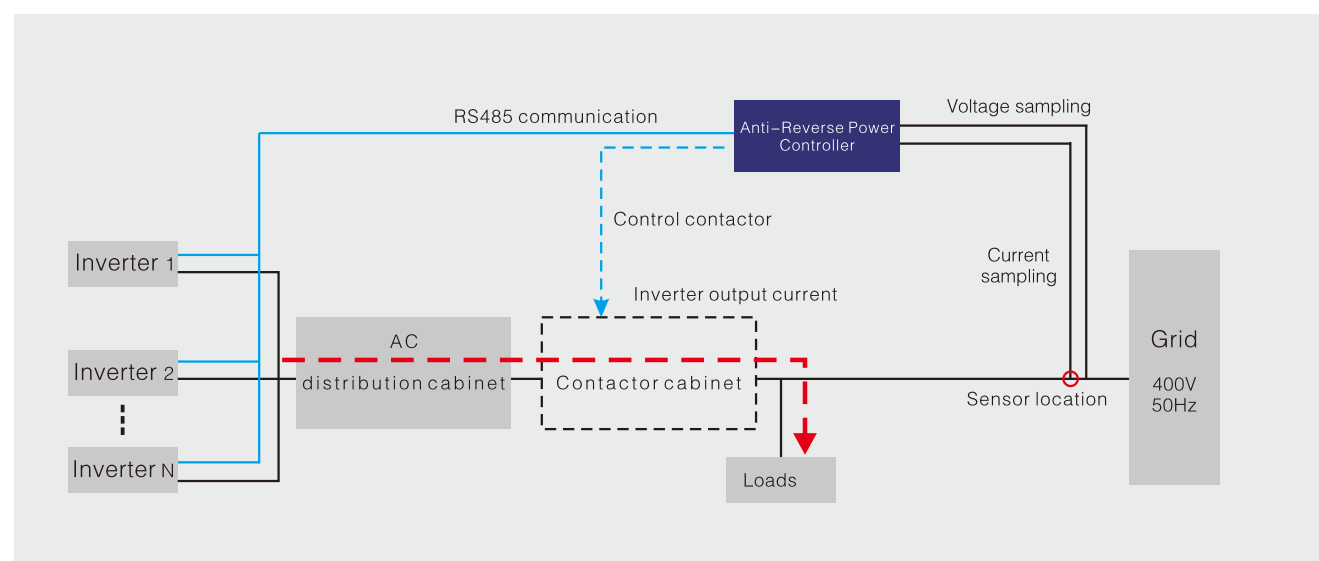
- > Support inverter power range:5kW~500kW
- > Max support 31 pcs inverters
- > Output power threshold can be set, stepless adjustment of inverter output
- > Built-in dry contact output

Model

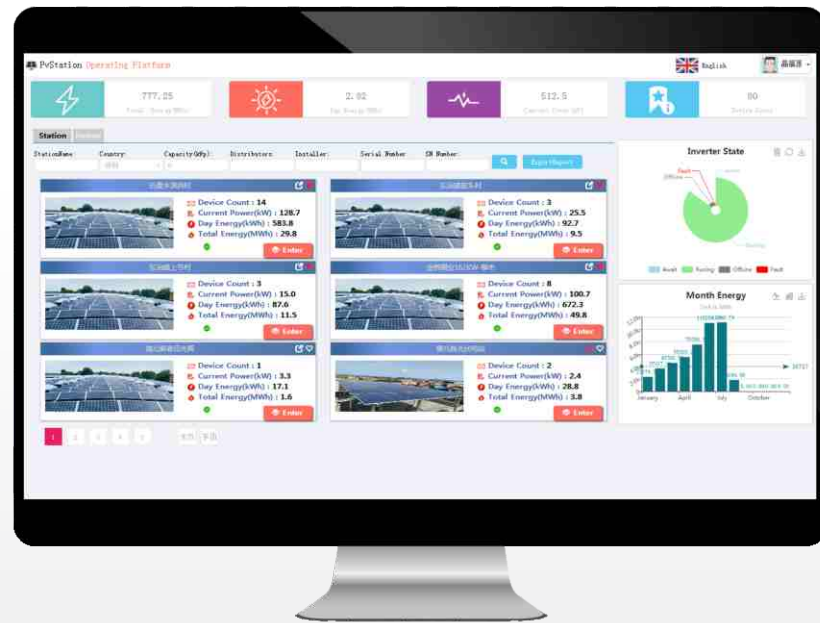
ARP1000

Applicable power range (kW)	5~500
Monitoring inverter number (pcs)	31 (Max)
Auxiliary power	220Vac, 50Hz
Consumption (W)	<50
Communicaion port	RS485
Display	LCD
Cooling concept	Natural
Operating temperature (°C)	-25~+55
Protection grade	IP20
Detection accuracy	0.5S (Using 0.5 class or above current transformer)
Dimension (W*D*H mm)	239*215*42
Weight (kg)	1.8

System Diagram



PV power plant monitoring and management platform

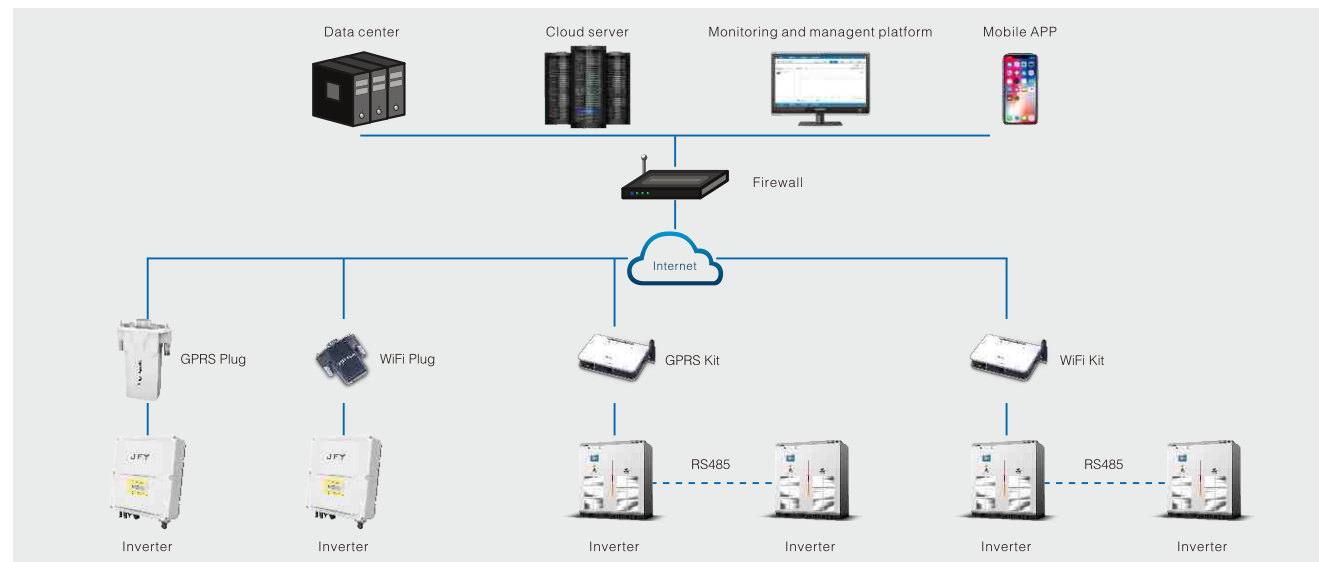


The PV power plant monitoring and management platform is an online PV monitoring platform that integrates equipment monitoring, data analysis and equipment management. User can view the real-time operation status of the power station, browse devices, view reports, real-time alarms and intelligent data analysis.

Features

- > Data multi-dimensional visual analysis, rapid diagnosis of the safety status of power plant
- > Support multiple statistical reports, satisfying different user requirements
- > Reliable and efficient database, continuous query data for 25 years
- > Flexible account permissions, multi-level management setting
- > Integration of monitoring and management, reducing operation and maintenance costs
- > Users can query power plant data information at any time through the browser

System Diagram



PV power plant monitoring and management platform

Technical Data

PV power plant monitoring and management platform

System Data

Language	Chinese, English
System support	Windows
Website	http://www.pvjfy.com
Data transfer interval (min)	5
System reliability	99%
Interactive mode	Screen, mouse, keyboard
Data retention period (year)	>25

System Function

Power plant monitoring	Real-time monitoring of equipment, proactive failure prompts, greatly improving management efficiency
Data analysis	Curves, histograms, tables, and other expressions, analysis of equipment and revenue
Data query	Multi-condition query, can get the data rapidly
Data report	Various report templates are built in the system to meet different customer needs.
Member management	User account permission settings are flexible, can create multiple management members

PV Plant Mobile Monitoring



Features

- > Real time monitoring, smart warning, improving management efficiency
- > Mobile power plant monitoring, achieving the smart monitoring
- > Scan code registration, locating the power plant, fast access to the plant
- > Smart monitoring platform, covering different user requirements

Scan code to download APP



PV Plant Mobile Monitoring

Technical Data	Mobile APP	WeChat Official Account
System Data		
Name	JFY PV	JFY PV monitoring
Language	Chinese, English	Chinese, English
System Support	Android 4.0 or above	Android 4.0 or above, IOS 8.0 or above
Data transfer interval (min)	5	5
System Function		
Map position	●	●
Scan code to add	●	●
Power plant search	●	●
Power plant information	●	●
Real time data	●	●
History data	●	●
Event warning	●	●
Power curve	●	●
Electricity statistic	●	●
Account registration	●	●
Password change	●	●
Add the power plant	●	●
Add the inverter	●	●

Partial projects in abroad

Residential string inverter project references

24kW residential PV plant, Delhi, India

Location: Delhi

Capacity: 24kW

Model: JSI 6000TL



20kW residential PV plant, Italy

Location: Italy

Capacity: 20kW

Model: JSI 5000TL

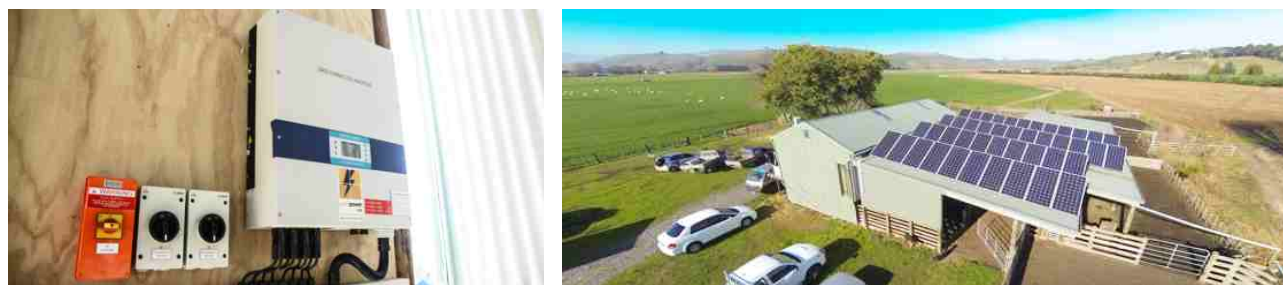


10kW residential PV plant, New Zealand

Location: New Zealand

Capacity: 10kW

Model: SUNTREE 10000TL



5kW residential PV plant, Muldenhamme, Germany

Location: Muldenhamme

Capacity: 5kW

Model: JSI 2000TL, 3000TL



Partial projects in abroad

Residential string inverter project references

5kW residential PV plant, Australia

Location: Sydney

Capacity: 5kW

Model: JSI 5000TL



5kW residential PV plant, Sri Lanka

Location: Sri Lanka

Capacity: 5kW

Model: SUNTREE 5000TL



3kW residential PV plant, Malaysia

Location: Malaysia

Capacity: 3kW

Model: JSI 3000TL



1.5kW residential PV plant, Chile

Location: Santiago

Capacity: 1.5kW

Model: JSI 1500TL



Partial projects in abroad

Industrial and commercial string inverter project references

1.2MW rooftop ground-mounted PV plant, Thailand

Location: Bangkok

Capacity: 1.2MW

Model: SUNTREE 20000TL



100kW PV plant, New Zealand

Location: New Zealand

Capacity: 100kW

Model: SUNTREE 10000TL



100kW PV plant, Australia

Location: Sydney

Capacity: 100kW

Model: SUNTREE 20000TL



40kW PV plant, Thailand

Location: Thailand

Capacity: 40kW

Model: SUNTREE 20000TL



Partial projects in abroad

Industrial and commercial string inverter project references

20kW PV plant, Vietnam

Location: Vietnam

Capacity: 20kW

Model: SUNTREE 20000TL



20kW PV plant, Thailand Buddhism Park

Location: Thailand

Capacity: 20kW

Model: SUNTREE 20000TL



15kW PV plant, Cambodia

Location: Cambodia

Capacity: 15kW

Model: SUNTREE 15000TL



18kW commercial PV plant, Philippines

Location: Philippines

Capacity: 18kW

Model: JSI 6000TL



Partial projects in China

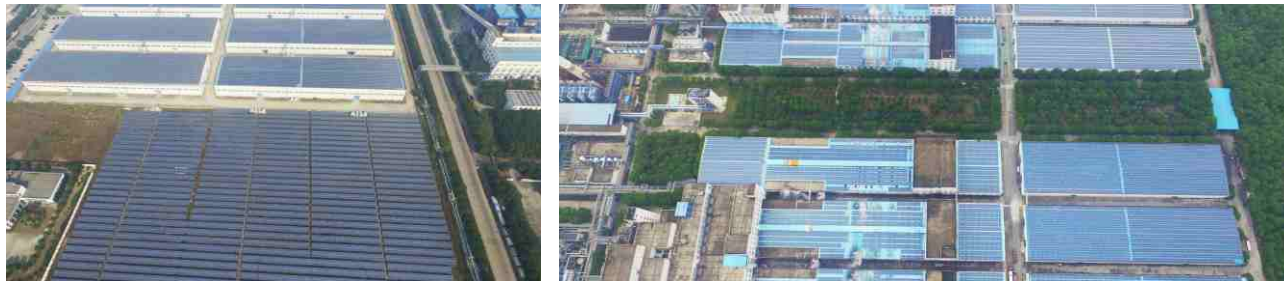
Central inverter project references

120MW ground-mounted PV plant, Jiangsu, China

Location: Jiangsu

Capacity: 120MW

Model: SP 1000KTL



31MW ground-mounted PV plant, Hebei, China

Location: Hebei

Capacity: 31MW

Model: SUNTREE 50KTL、SP 1000KTL



30MW ground-mounted PV plant, Inner Mongolia, China

Location: Inner Mongolia

Capacity: 30MW

Model: SP 1000KTL



30MW demonstration PV plant, Henan, China

Location: Luoyang

Capacity: 30MW

Model: SUNFOREST 100KT、150KT、250KT



Partial projects in China

Central inverter project references

30MW ground-mounted PV plant, Xinjiang, China

Location: Xinjiang

Capacity: 30MW

Model: SP 1000KTL



10MW rooftop demonstration PV plant, Luoyang, Henan, China

Location: Luoyang

Capacity: 10MW

Model: SUNFOREST 500KTL



10MW ground-mounted PV plant, Helongjiang, China

Location: Helongjiang

Capacity: 10MW

Model: SP 500KTL



6.5MW demonstration ground-mounted PV plant, Anhui, China

Location: Anhui

Capacity: 6.5MW

Model: SUNFOREST 500KT



Partial projects in China

Industrial and commercial string inverter project references

20MW PV plant, Inner Mongolia, China

Location: Inner Mongolia

Capacity: 20MW

Model: SUNTREE 28000TL



10MW PV plant, Hubei, China

Location: Hubei

Capacity: 10MW

Model: SUNTREE 30000TL



10MW PV plant, Guangxi, China

Location: Guangxi

Capacity: 10MW

Model: SUNTREE 20000TL



3MW PV plant, Henan, China

Location: Henan

Capacity: 3MW

Model: SUNTREE 50KTL



Partial projects in China

Industrial and commercial string inverter project references

3MW PV plant, Shandong, China

Location: Shandong

Capacity: 3MW

Model: SUNTREE 20000TL



3MW rooftop demonstration PV plant, Jiangxi, China (One)

Location: Jiangxi

Capacity: 3MW

Model: SUNTREE 5-60kW

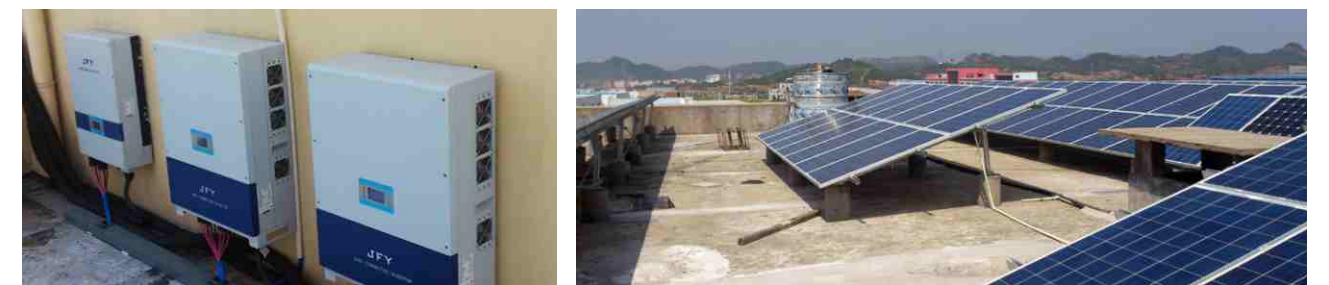


3MW rooftop demonstration PV plant, Jiangxi, China (Two)

Location: Jiangxi

Capacity: 3MW

Model: SUNTREE 5-60kW



3MW rooftop demonstration PV plant, Jiangxi, China (Three)

Location: Jiangxi

Capacity: 3MW

Model: SUNTREE 5-60kW



Partial projects in China

Industrial and commercial string inverter project references

3MW rooftop demonstration PV plant, Jiangxi, China (Four)

Location: Jiangxi

Capacity: 3MW

Model: SUNTREE 5-60kW



3MW rooftop demonstration PV plant, Jiangxi, China (Five)

Location: Jiangxi

Capacity: 3MW

Model: SUNTREE 5-60kW



3MW ground-mounted PV plant, Beijing

Location: Beijing

Capacity: 3MW

Model: SUNTREE 20000TL



2.5MW PV plant, Jiangsu, China

Location: Jiangsu

Capacity: 2.5MW

Model: SUNTREE 50KTH



Partial projects in China

Residential string inverter project references

20kW PV plant, Jiangsu, China

Location: Jiangsu

Capacity: 20kW

Model: SUNTREE 20000TL



12kW PV plant, Hunan, China

Location: Hunan

Capacity: 12kW

Model: SUNTREE 12000TL



10kW residential PV plant, Guangxi, China

Location: Guangxi

Capacity: 10kW

Model: SUNTREE 10000TL



10kW PV plant, Sichuan, China

Location: Sichuan

Capacity: 10kW

Model: SUNTREE 10000TL

